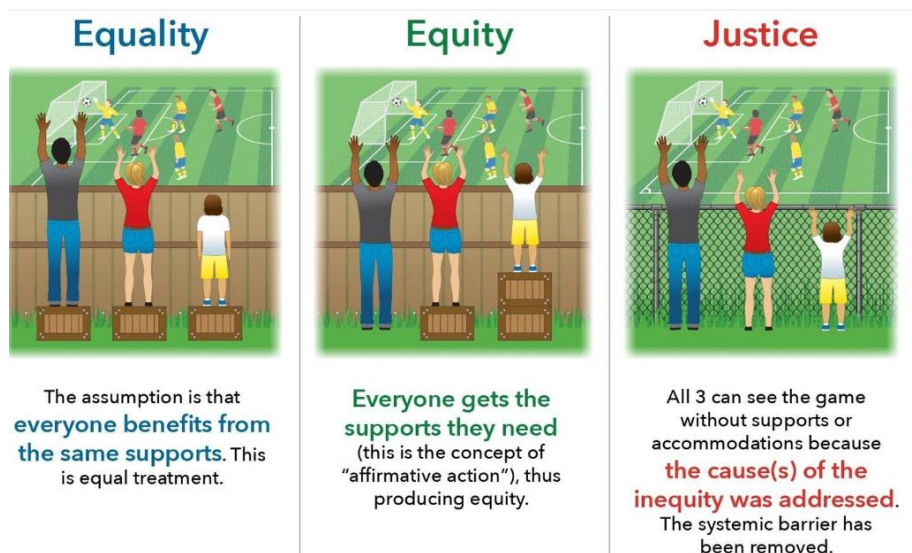


## Equality at Fakenham Primary Federation

As part of Synergy MAT we follow the trust wide Equality and Diversity Policy. This is published on our the website of our Trust. This is the link to the policy: [Equality and Diversity Policy 2023 \(1\).pdf](#)

At FPF we will aim to work towards a Justice model of equality:



### **Objectives: 2025-2028**

- To move from a model of Equity to Justice in our schools.
- To challenge all stereotypes of roles with children through our curriculum
- To ensure a diverse range of literature, visuals etc are displayed in school that promote people in different ways. Staff should consider: race, ethnicity, gender, disability, age, general appearance (clothing, hair etc). Staff should ask Do children recognise themselves and their families? Are children challenged by known stereotypes?
- To constantly review how we promote roles in the school to try and increase diversity in all areas of the school.